

Dictate

About the pleasure of obeying and
the daily life in serfdom

performance for 2 actors



BRACHLAND-ENSEMBLE
Performing Arts | Documentary | Installation

DICTATE

About the pleasure of obeying
and the daily life in serfdom

performance for two actors of the
Brachland-Ensemble

INDEX

overview

content

information for schools

guest performances

team

the Brachland-Ensemble

contact

sponsored by



Kassel **documenta Stadt**
Kulturamt

dictate

OVERVIEW

The performance "Dictate" deals with the daily dictates in the interpersonal and social togetherness. In 5 rounds with different rules two performers and the audience are giving orders and react to it. Because its improvisational character the evening becomes an exciting study of our society. The production is suitable for all ages and can be adapted accordingly. An English performance is also possible.

premiere

January 24, 2014 in Kassel

participants

2 performers, 1 technician

duration

55 minutes

language

german or english

video trailer

brachland-ensemble.de/projekte/diktat

guest/school performances

We are looking forward to requests. We offer preparation and follow-up as well.

recommendation

From age of 10 up.


contact

Brachland-Ensemble

Dominik Breuer (Company Management)

+49 178 561 22 04

dominik@brachland-ensemble.de



*"Come here and sit!
Keep still! I said: keep still!"*

"Fall in love with me!"



“Relax!”



CONTENT

starting point ...

...for the performance „Dictate“ is the study of widespread statement structures and paternalism in public and private life. At first Dominik Breuer and Gunnar Seidel collected imperatives in their surroundings: in memories of their parents, in kindergarten, in school, in offices, in the internet as well as in interpersonal relationships, and complemented the text-material with fictional orders.

A commands B

During the performance the lust of giving orders and the matter of course of serfdom is sharpened by a simple theatre exercise: A commands B, B executes the order immediately. When do they cross the border of a theatrical game and reach a possible humiliation?

rules

round 1

A commands B, B has to comply

round 2

A commands B, B is allowed to refuse

round 3

A commands B, A punishes/
rewards the refuse/execution

round 4

A commands B, C (the audience) decides about duration of the task by lowering the raised arm


round 5

C commands A and B

press

*Hessische Niedersächsische Allgemeine (Kassel),
Jan 25, 2014:*

„The pleasure to command“ - The Brachland-Ensemble fascinates with the performance ‚Dictate‘ [...] As introduction to their performance ‚Dictate‘ Dominik Breuer and Maria Isabel Hagen from the Brachland-Ensemble read several pages of such commands in the Dock 4. Everybody has heard most of them. Then begins their compelling game. [...] The performance ‚Dictate‘ makes the audience feel the pleasure or resistance, that comes with wielding power over someone else. [...] Because it arises from the moment, the provokative performance is fascinating and thrilling. After one and a half hours the audience leaves the room, from inspired to irritated.“

A photograph of a man on a stage, wearing a white shirt and a red tie, looking towards the right. The background is dark with some stage lights.

"Be entertaining!"

WORKSHOPS

educational offers for schools and companies

A special feature of the production is the possibility to adjust it to audiences of different ages. The performers react intuitively to the individual age category.

We also offer to embed the production in a half-/full-day workshop for school classes as well as for companies or associations.


During the workshop the participants not only find out about power structures, but experience immediately the structures' impacts. In the production's secure framework they learn the consequences decisions might bring, but also how to develop strategies to brake free from a power structure. Without the educational forefinger, production and workshop touch issues like values, human rights and their

violation as well as the power words can have, be it wisdom of a feather or the sharpness of a blade. And not least how fragile the dividing lines between democracy and dictatorship can be, in politics or on the schoolyard. Our performers always keep the right measure and don't step over two important boundaries:

1. The audience will never be exposed or made fun of and has a choice.
2. The creativity of the improvised dictate never serves the entertaining, even lurid or humiliating end in itself, but only the transparency of structures and principles.

Our performers are trained in theatre pedagogy and have extensive experience in dealing with younger audiences or as well as coaching of adult participants.

For the workshop comfortable clothing is required. Beverages are provided on request.



"Pick that up!"

stage requirements

The production is very flexible in view of the location. From classical theatre space to class room. The audience sits in a square around the play area and builds the performance's arena.

minimum dimensions

4m x 4m

technical setup

about 1 hour

sound equipment

CD player or mini jack plug to connect with notebook, stereo speakers

light setup for theatres

play area seen from four sides
audience sits in the dark
Scene 5: audience illuminated

light setup for i.e. class rooms

overhead/room light

further

2 chairs



BRACHLAND-ENSEMBLE

Performing Arts | Documentary | Installation

CONCEPT

performing arts | documentary | installation

The Brachland-Ensemble is a group of theatre professionals from the fields of acting, performance, directing, dance and film. It implements projects between the poles of performing arts, documentary and installation, analysing social constructions and questioning the resulting conventions.

The selection of topics reflects the ensemble's artistic diversity: current political events like the release of the CIA torture report, critical approaches to media and society as well as personal artistic issues are building the starting point to the project development. Partially based on research up to 18 months.

For instance, the ensemble conducted interviews in India, Ghana, Israel and Palestine, as well as in Sweden, Belgium and Germany and has built an international Network with artists and organisations (e.g. Amnesty International and the German UNICEF commission).

Since their foundation in 2011 a wide range

of projects has emerged: from solo works and reduced performances, through complex video installations and site-specific video walks, up to acting productions with large cast and inner-city parlour games in public space with participation of a whole town (town jubilee, Fulda 2019).

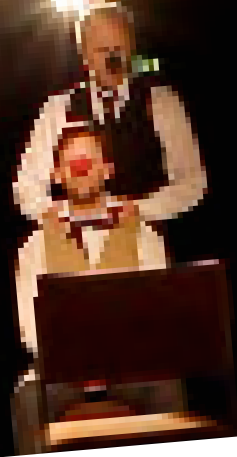
As of January 2018 the artistic direction is in the hands of Dominik Breuer (Brussels), Maria Isabel Hagen (Hamburg) und Gunnar Seidel (Nuremberg). The ensemble's fundings are always project-related. There is no fix venue.

AWARDS AND NOMINATIONS

- 2017** Audience Award for READY FOR BOARDING, Made Festival, Kassel
- 2017** Jury Award for READY FOR BOARDING, Hessian Theatre Days, Darmstadt
- 2016** Nominated for Innovation Award Social-Culture for LEBENSLÄUFER
- 2015** Cultural Promotion Award of the city of Kassel
- 2013** Nomination Kurt Hackenberg Award for Political Theatre for IM SCHWEISSE DEINES ANGESICHTS, Cologne
- 2013** Award "Young Experts" for IDOLE, Hessian Theatre Days, Gießen
- 2011** Jury Award for BLINDER, "AllesWasTanzt" Festival, Cologne

“Massage me! – Ouch!

*Massage me the way you would
massage your girlfriend!”*



TEAM

team

The performance is played by changing formations of Brachland-Ensemble members.

concept

Gunnar Seidel and Dominik Breuer

performers (changing cast)

Anika Pinter, Maria Isabel Haben, Eric Rentmeister, Gunnar Seidel, Dominik Breuer

assistance

Felix Kramer

layout

Gunnar Seidel

management

Dominik Breuer

public relations

Maria Isabel Hagen

Further information and CV's on www.brachland-ensemble.de

**Say Hallo! Say bye bye! Wet that! Don't you want
to say Hallo to Daddy?! Shake hands!**

Press hard! Be a man! Behave!

CONTACT

contact



Gunnar Seidel

artistic direction, layout, accounting
+49 170 30 22 957
gunnar@brachland-ensemble.de
Nuremberg



Dominik Breuer

artistic direction, company management
+49 178 561 22 04
dominik@brachland-ensemble.de
Brussels



Maria Isabel Hagen

artistic direction, public relations
+49 170 1201120
mariaisabel@brachland-ensemble.de
Hamburg